

Customer Care Solutions
RH-18/36/38 Series Transceivers

Disassembly Instructions

[This page left intentionally blank]

Table of Contents

	Page No
Nokia 1100 Disassembly	5
Domesheet Exchange	8

[This page left intentionally blank]

Nokia 1100 Disassembly

Disassembly instructions (also see the video clips on care point)



If not already done protect the display window with a film to avoid dust and scratches.



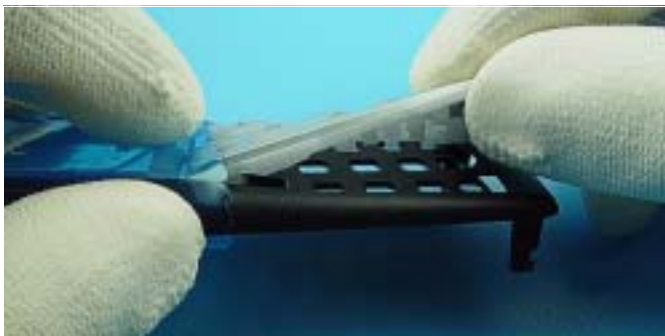
Press the Release Button before removing the Battery Cover.



Open A-Cover from bottom side on.



Use SRT-6 to unlock Keymat from A-Cover.



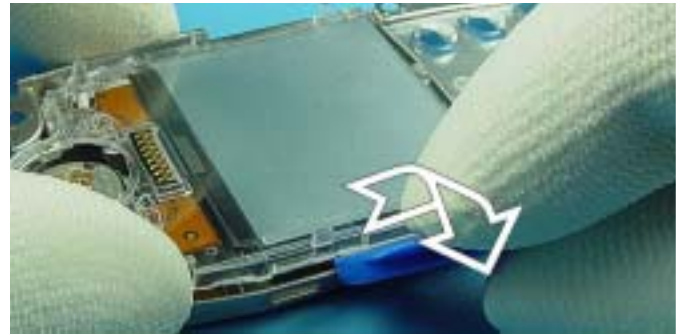
Now, Keymat can be taken away easily.



Unscrew the six Torx Plus® size 6 screws. **For assembly, the reverse order and a Torx Plus driver with a torque of 21Ncm have to be used.**



Remove C-Cover from Engine Module.



Unlock LCD snaps on both sides of the display.



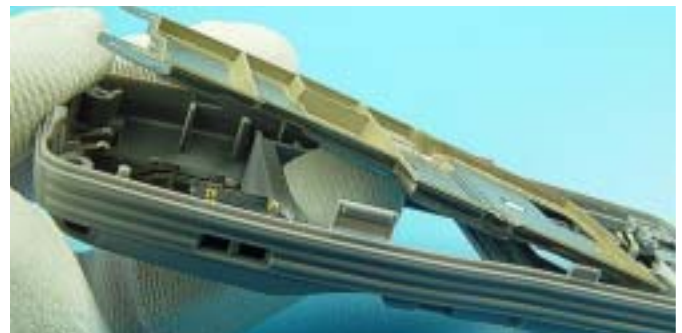
Remove LCD inclusive Lightguide.



Use tweezers when removing the Speaker.



Take Engine Module from D-Cover.



Lever out Shielding, beginning from the top side of the unit.



If System Connector is tight in the D-Cover, SRT-6 should be used to loosen it.



Carefully push out Microphone from System Connector. Moderate force is required for this action.



Lever out Vibra Motor with tweezers.

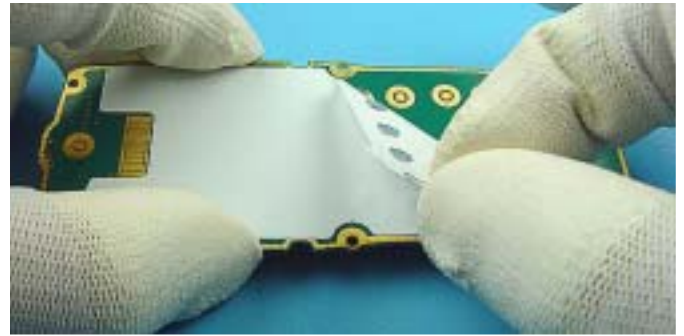


Remove Buzzer from its guidance. Take care not to damage the spring contacts.

Domesheet Exchange



Use SRT-6 to loosen one corner of the Domesheet.



Tear off Domesheet in diagonal direction to avoid remains of glue.



Take a new Domesheet from carrier film. Do not touch the keydomes from lower side.



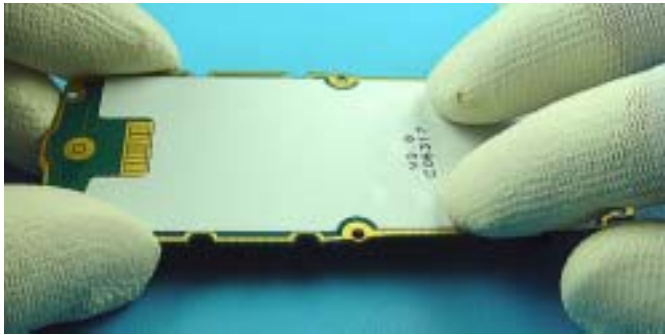
Position Domesheet in direction to the upper right corner, as close as possible to the shielding edge.



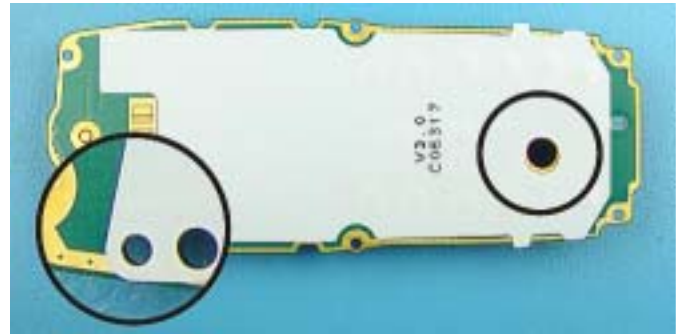
Slowly place Engine Module from top side on.



Before sinking the Engine Module, make sure that it is also close to the same side of the shielding.



Carefully press-on the Domesheet to the module and avoid bubbles.



Finally check that the holes of the Domesheet match exactly to the ones in the Engine Module. Otherwise change Domesheet again!

[This page left intentionally blank]